

BowenECMSolutions.com

Simple Bulk Loader

User Manual and Guide, version 1.1



2011

Contents

Simple Bulk Loader Introduction	3
Installation & Configuration	4
Bulk Document Import	5
Importing Data	5

Simple Bulk Loader Introduction

Simple Bulk Loader is a bulk document import program for FileNet P8 content management systems with optional versioning features. The user provides an excel file (workbook) that may contain multiple tabs (worksheets). The user then selects the desired worksheet and the program will validate all metadata prior to allowing the user to import the documents. Each field is validated to P8 properties including data type, length and values as applicable for choice list enabled properties. After bulk importing the user can optionally file documents into an object store folder they have 'file in' access rights to.

The program is multi-threaded, installs easily and quickly on any computer or server with .Net framework installed.

Data Validation Features

- Required property validation
- Maximum length
- Conflicting data type, ie date value in Boolean fields
- Conflicting choice list values where user has mismatched letter case or values
- Whitespace removal where cell value is empty but not null, occurs when user deletes values from cells

File Validation Features

- Path to documents is validated
- Content size must be >0 bytes
- Auto-populated document title from the file name if document title in provided spreadsheet is null value

Import Features

- Multi-threaded imports provides high speed ingestion without overwhelming P8 content engine
- Optionally version documents on a repeating key field that is user selectable per batch
- Job restart and pause feature resumes from last item loaded in batch

Ease of Use

- User guided import process with controls in place to prevent common user errors
- Robust and highly reliable, used in five countries to import data
- Save bulk import results with the P8 document ID for auditing purposes.
- Accepts display, symbolic and fuzzy logic match for P8 property to excel column naming

Installation & Configuration

Conflicting software

1. The local machine or server should not have the FileNet API dll installed in the .Net global assembly cache (GAC).

Prerequisites

1. All Microsoft based operating systems are supported.
2. .Net framework 4.0.
3. Microsoft Web services extensions 3.0 (WSE 3.0)
4. Network connectivity to P8 system.
5. Administrative rights to install the program.
6. 2.4Ghz CPU or faster (recommended).
7. 2 gigabytes of memory (minimum).

Installation Instructions

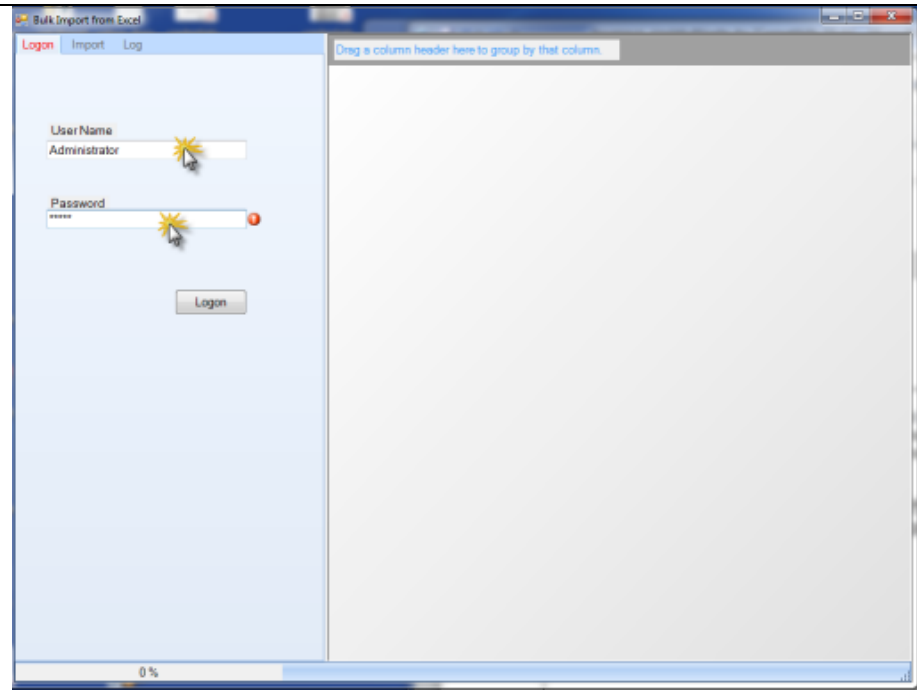
1. Download the latest installer from the web site or use your own automated installer.
2. If present, uninstall the existing version using Add/Remove programs.
3. Accept all defaults on installation or optionally choose installation directory of your choice.
4. If desktop prerequisites are missing the installer will prompt the user for installation from the vendors website.
5. The desktop Installation complete and shortcuts will be placed on the user's desktop and programs menu.
6. Enter the P8 web service interface endpoint into the application's configuration file by editing the configuration file in notepad and locate the P8WSURL setting.

```
<setting name="P8WSURL" serializeAs="String">  
    <value>http://yourCEHostName:port/wsi/FNCEWS40MTOM/</value>  
</setting>
```
7. Copy the license file provided to you into the application folder.

Bulk Document Import

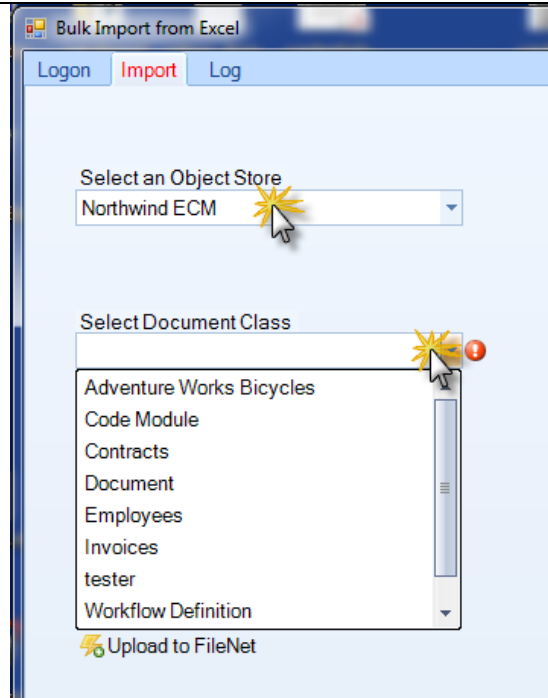
Importing Data

1. Launch the application and enter your credentials. By default the User Name text box will be populated with the current users logon name obtained from the operating system, you may change this value if you desire. Enter your password then click LOGON.



Simple Bulk Loader for FileNet P8 Content Management Systems

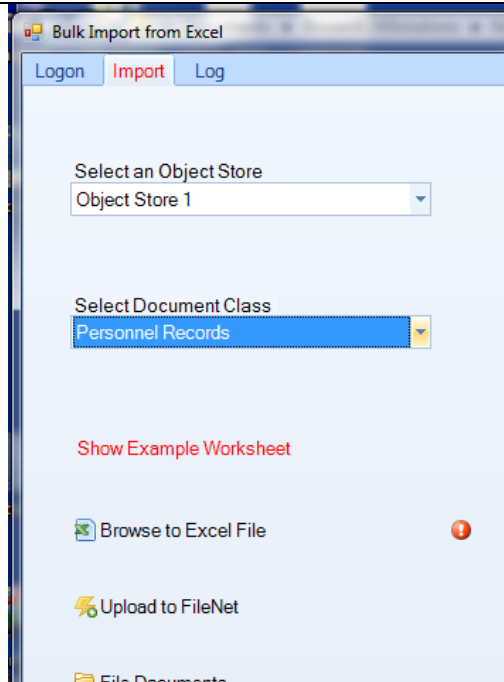
2. After the successful logon the program will automatically select the IMPORT tab for you. Click the OBJECT store drop down and then the document class drop down. The program will read the class definitions you have access to which may require a minute or two to load depending upon performance and size of your P8 system.



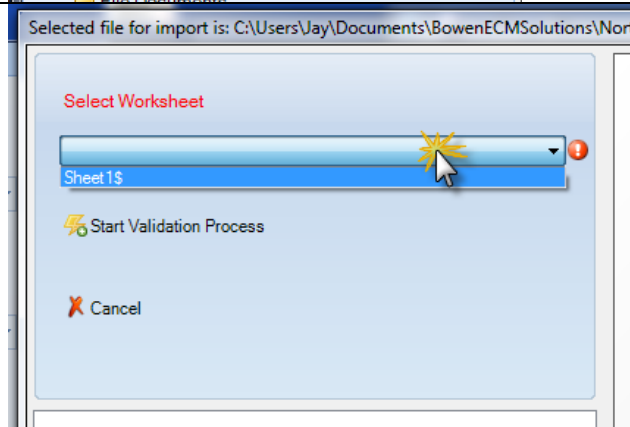
Simple Bulk Loader for FileNet P8 Content Management Systems

3. TIP: If you need to create a template excel file click SHOW EXAMPLE worksheet which will export a template excel file containing the columns that correspond to P8 properties (fields).

4. Click BROWSE TO EXCEL FILE to select an excel workbook.



5. After selecting the excel file the available worksheets will appear in the drop down, select your desired worksheet from the workbook.



Simple Bulk Loader for FileNet P8 Content Management Systems

- 6. After selecting the worksheet the data will be imported from excel into the grid
- 7. Blue columns represent required data fields.

Selected file for import is: C:\Users\Jay\Documents\BowenECMSolutions\Northwind Test Data\Bulk Load from Excel (personnel)\Bulk Import Personnel Record

Select Worksheet

Sheet1\$

Start Validation Process

Cancel

Checking to see if user provided file name or full UNC path, test value is:C:\Users\Jay\Documents\BowenECMSolutions\Northwind Test Data\Bulk Load from Excel (personnel)\Bulk Import Personnel Record

Entering source column name validation

DocumentTitle was found in source and is a valid P8 property for this class

PersonnelDocType was found in source and is a valid P8 property for this class

PersonnelNumber was found in source and is a valid P8 property for this class

SSN was found in source and is a valid P8 property for this class

EmployeeName was found in source and is a valid P8 property for this class

Finished source column name validation

Entering column purge routine

Removed column: My file name

Gracefully exited from column purge routine

Adding source columns if needed

Gracefully exited from source column add, accepted table changes

Gracefully exited column sort routine

Checking to see if user provided file name or full UNC path, test value is:C:\Users\Jay\Documents\BowenECMSolutions\Northwind Test Data\Bulk Load from Excel (personnel)\Bulk Import Personnel Record

Entering source column name validation

DocumentTitle was found in source and is a valid P8 property for this class

PersonnelDocType was found in source and is a valid P8 property for this class

PersonnelNumber was found in source and is a valid P8 property for this class

SSN was found in source and is a valid P8 property for this class

EmployeeName was found in source and is a valid P8 property for this class

Finished source column name validation

Entering column purge routine

Gracefully exited from column purge routine

Adding source columns if needed

Gracefully exited from source column add, accepted table changes

Gracefully exited column sort routine

xDocUNC	Document Title	Personnel Doc Type	Personnel Number
1	C:\Users\Jay\Doc	Demo Bulk Load	Performance Review 1234
2	C:\Users\Jay\Doc	Demo Bulk Load	Performance Review 1234
3	C:\Users\Jay\Doc	Demo Bulk Load	Performance Review 1234
4	C:\Users\Jay\Doc	Demo Bulk Load	Performance Review 1234
5	C:\Users\Jay\Doc	Demo Bulk Load	Performance Review 1234
6	C:\Users\Jay\Doc	Demo Bulk Load	Performance Review 1234
7	C:\Users\Jay\Doc	Demo Bulk Load	Performance Review 1234
8	C:\Users\Jay\Doc	Demo Bulk Load	Performance Review 1234
9	C:\Users\Jay\Doc	Demo Bulk Load	Performance Review 1234
10	C:\Users\Jay\Doc	Demo Bulk Load	Performance Review 1234
11	C:\Users\Jay\Doc	Demo Bulk Load	Performance Review 1234
12	C:\Users\Jay\Doc	Demo Bulk Load	Performance Review 1234
13	C:\Users\Jay\Doc	Demo Bulk Load	Performance Review 1234
14	C:\Users\Jay\Doc	Demo Bulk Load	Performance Review 1234
15	C:\Users\Jay\Doc	Demo Bulk Load	Performance Review 1234
16	C:\Users\Jay\Doc	Demo Bulk Load	Performance Review 1234
17	C:\Users\Jay\Doc	Demo Bulk Load	Performance Review 1234
18	C:\Users\Jay\Doc	Demo Bulk Load	Performance Review 1234
19	C:\Users\Jay\Doc	Demo Bulk Load	Performance Review 1234
20	C:\Users\Jay\Doc	Demo Bulk Load	Performance Review 1234
21	C:\Users\Jay\Doc	Demo Bulk Load	Performance Review 1234
22	C:\Users\Jay\Doc	Demo Bulk Load	Performance Review 1234
23	C:\Users\Jay\Doc	Demo Bulk Load	Performance Review 1234
24	C:\Users\Jay\Doc	Demo Bulk Load	Performance Review 1234
25	C:\Users\Jay\Doc	Demo Bulk Load	Performance Review 1234

Simple Bulk Loader for FileNet P8 Content Management Systems

8. Click the START VALIDATION PROCESS to validate the metadata from the excel spreadsheet to FileNet P8 data fields.
9. If there are metadata or missing file errors a cell error icon will display on the respective cell, another error icon is shown on each ROW SELECTOR to quickly identify which rows have an error by scrolling vertically to locate the row then horizontally to fix the error.
10. Metadata errors can be fixed by editing the grid or by selecting the desired rows and using the keyboard DELETE key.

Selected file for import is: C:\Users\Jay\Documents\BowenECMSolutions\Northwind Test Data\Bulk Load from Excel (personnel)\Bulk:

Select Worksheet

Sheet1\$

Start Validation Process

Cancel

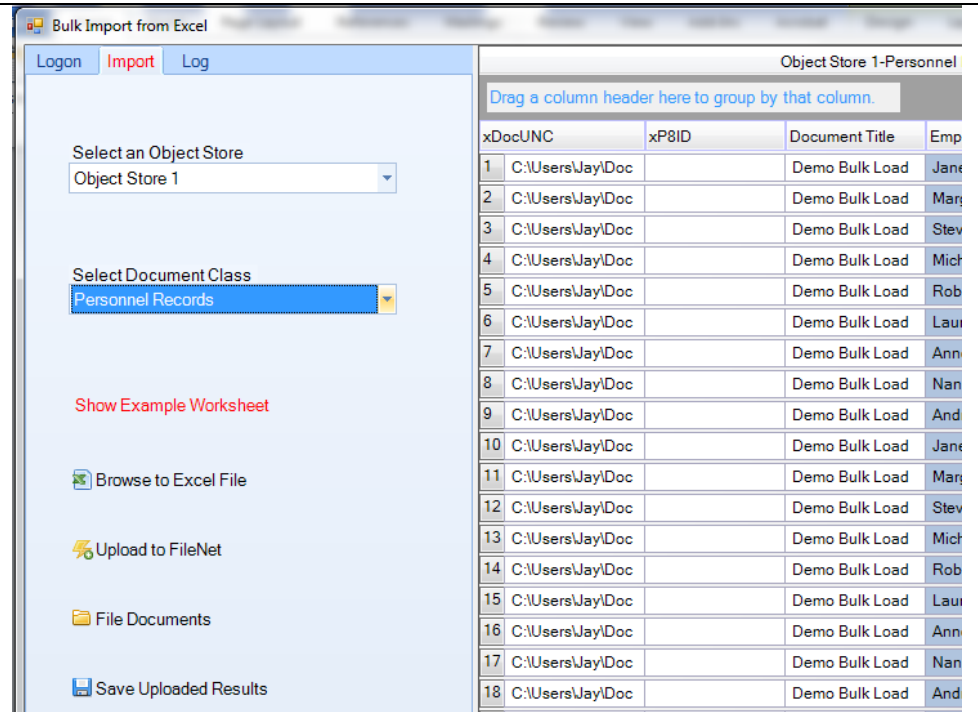
xDocUNC	Document Title	Personnel Doc Ty
22	C:\Users\Jay\Doc	Demo Bulk Load Performance Rev
23	C:\Users\Jay\Doc	Demo Bulk Load Performance Rev
24	C:\Users\Jay\Doc	Demo Bulk Load Performance Rev
25	C:\Users\Jay\Doc	Demo Bulk Load Performance Rev
26	C:\Users\Jay\Doc	Demo Bulk Load Performance Rev
27	C:\Users\Jay\Doc	Demo Bulk Load Performance Rev
28	C:\Users\Jay\Doc	Demo Bulk Load Performance Rev
29	C:\Users\Jay\Doc	Demo Bulk Load Performance Rev
	C:\Users\Jay\	Demo Bulk Load Performance Rev
31	C:\Users\Jay\Doc	Demo Bulk Load Performance Rev
	C:\Users\Jay\	Demo Bulk Load Performance Rev
33	C:\Users\Jay\Doc	Demo Bulk Load Performance Rev
34	C:\Users\Jay\Doc	Demo Bulk Load Performance Rev
35	C:\Users\Jay\Doc	Demo Bulk Load Performance Rev
36	C:\Users\Jay\Doc	Demo Bulk Load Performance Rev
37	C:\Users\Jay\Doc	Demo Bulk Load Performance Rev
38	C:\Users\Jay\Doc	Demo Bulk Load Performance Rev
39	C:\Users\Jay\Doc	Demo Bulk Load Performance Rev
	C:\Users\Jay\	Demo Bulk Load Performance Rev
41	C:\Users\Jay\Doc	Demo Bulk Load Performance Rev
42	C:\Users\Jay\Doc	Demo Bulk Load Performance Rev
43	C:\Users\Jay\Doc	Demo Bulk Load Performance Rev
44	C:\Users\Jay\Doc	Demo Bulk Load Performance Rev
45	C:\Users\Jay\Doc	Demo Bulk Load Performance Rev
46	C:\Users\Jay\Doc	Demo Bulk Load Performance Rev
47	C:\Users\Jay\Doc	Demo Bulk Load Performance Rev
48	C:\Users\Jay\Doc	Demo Bulk Load Performance Rev

```

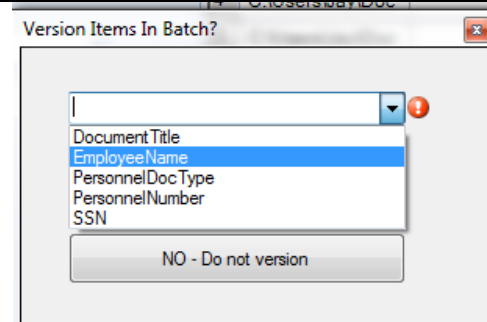
Error Count: 3
About to start validation process
Starting Data validation
Gracefully exited File validation
Checking for whitespace in source values...
Removing whitespace from: Document Title
Removing whitespace from: Personnel Doc Type
Removing whitespace from: Employee Name
Finished whitespace cleanup....
Entered validate files routine
Total Files to verify: 79
Finished file validation routine with result:False
Starting Data validation for each row, column and cell
Entering data validation routine....
Starting validation for property Document Title
longest length string for this property is: 14
Total validation time for property Document Title was 0.1140066 seconds
Starting validation for property Employee Name
longest length string for this property is: 17
Total validation time for property Employee Name was 0.0730042 seconds
Starting validation for property Personnel Doc Type
longest length string for this property is: 18
Total validation time for property Personnel Doc Type was 0.0730042 seconds
Starting validation for property Personnel Number
longest length string for this property is: 9
Total validation time for property SSN was 0.0760044 seconds
Gracefully exited data validation routine....
Data validation completed, results are:False
    
```

Simple Bulk Loader for FileNet P8 Content Management Systems

11. After the data has validated the dialog returns to the import screen. Click UPLOAD to FILENET to begin the import process.

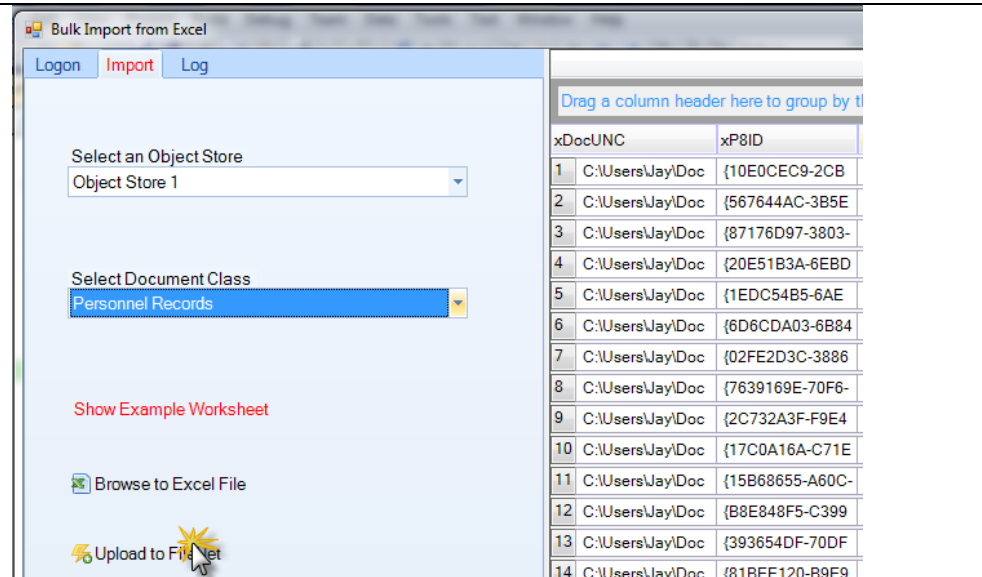


12. OPTIONAL: To version documents within the import spreadsheet select a property that contains a repeating value. As the program imports data the current row property value is compared to previous row property value, if the values are equal the document is revised (versioned).

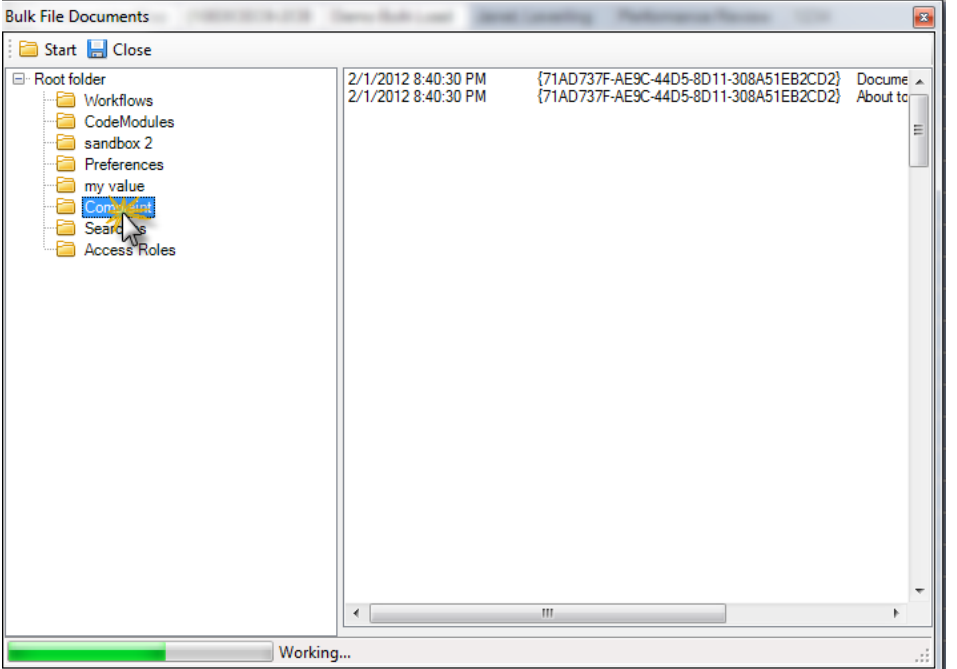


Simple Bulk Loader for FileNet P8 Content Management Systems

13. The documents will now begin importing into FileNet. Speed is governed by the size of documents in megabytes, larger files will take longer to import versus smaller files. The xP8ID column will be populated with P8 IDs as the import process runs along with the progress bar to show overall import progress.



Simple Bulk Loader for FileNet P8 Content Management Systems

<p>14. Following the import process, the user may optionally file into a P8 folder of their choice where they have file in access rights.</p> <p>15. IBM does not recommend filing large numbers of documents into folders for performance reasons. Please use this feature only when needed.</p>	
<p>16. Congratulations, you have mastered bulk importing with Simple Bulk Loader!</p>	